



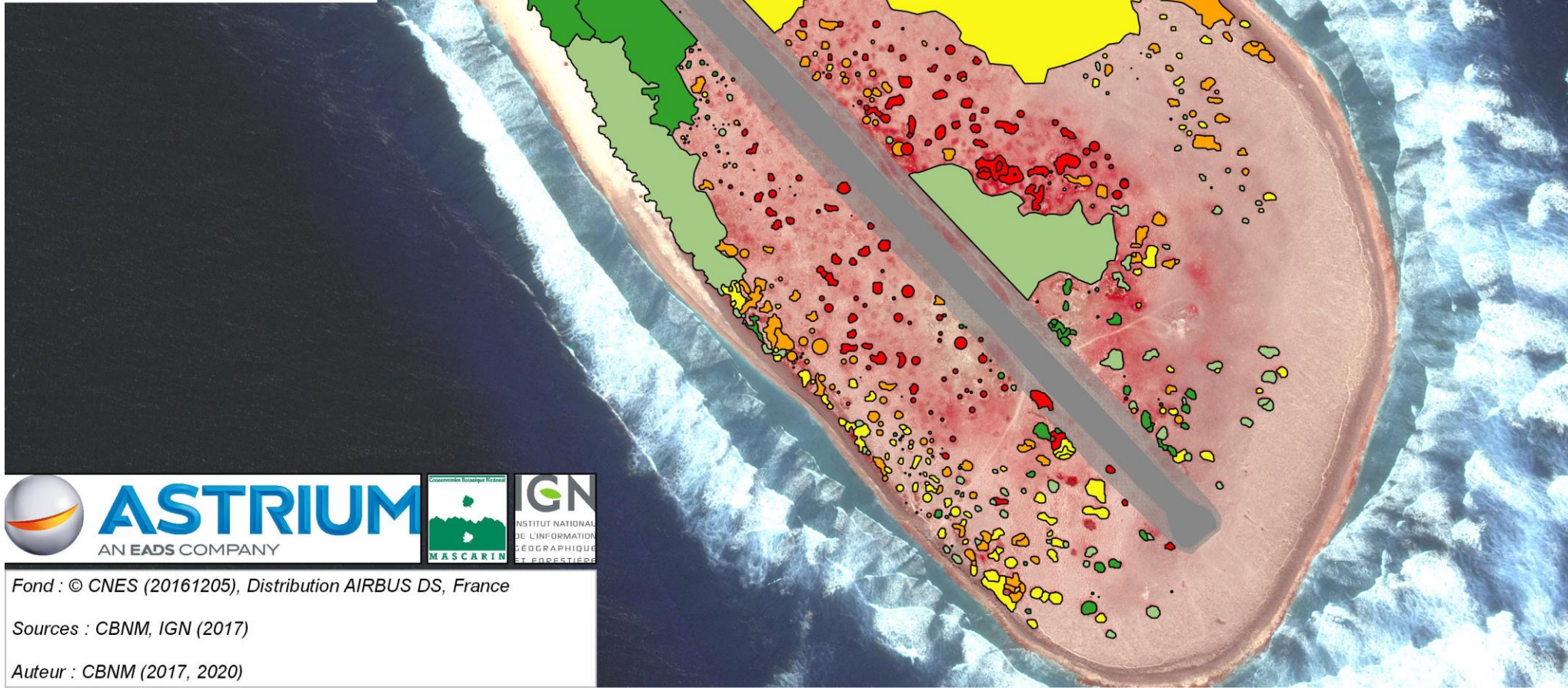
CARTE DU VELOUTIER SUR TROMELIN

Etat sanitaire (taux de recouvrement foliaire)

-  0% (mort)
-  > 0 - 25%
-  > 25 - 50%
-  > 50 - 75%
-  > 75%

-  Anthropisé (camp et piste)
-  Perturbé (abords de piste)

0 100 200 300 400 m







Fond : © CNES (20161205), Distribution AIRBUS DS, France



Sources : CBNM, IGN (2017)

Auteur : CBNM (2017, 2020)

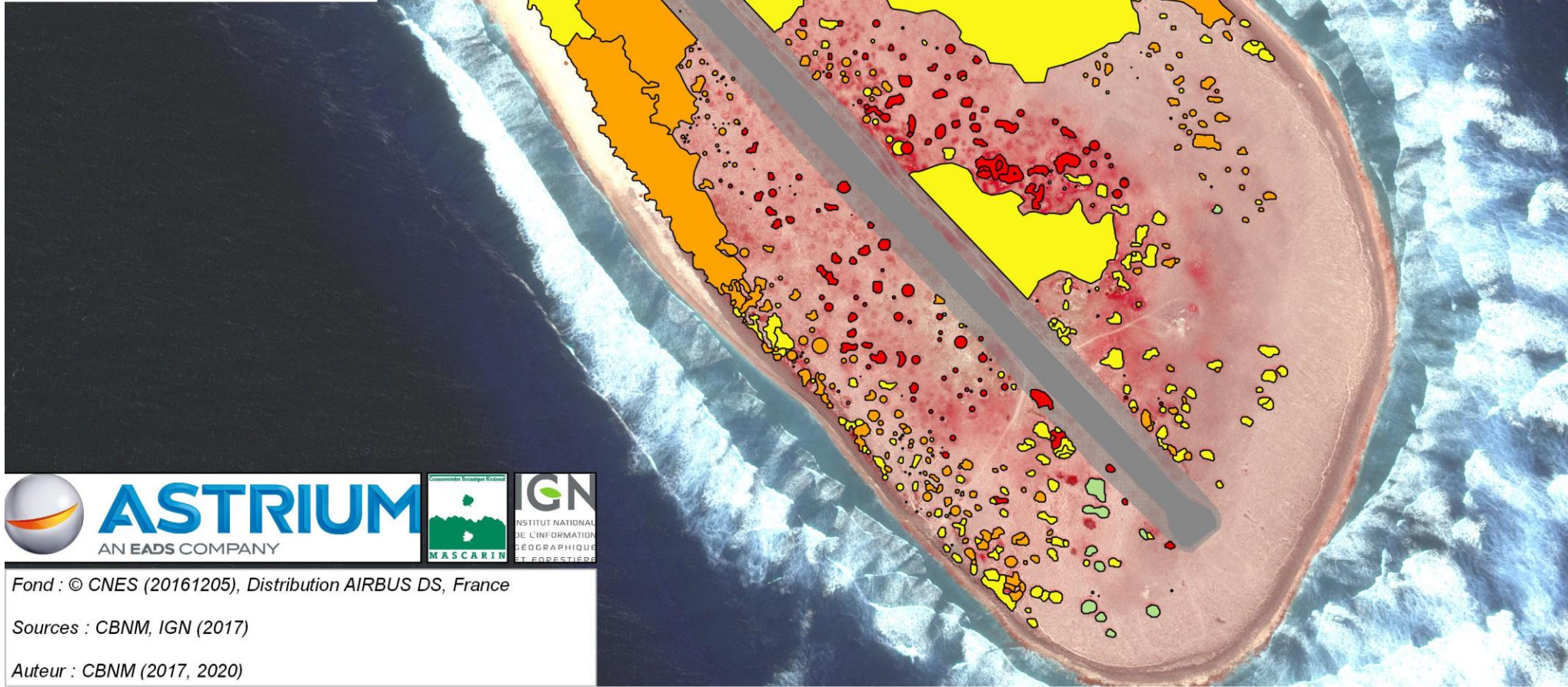
CARTE DU VELOUTIER SUR TROMELIN

Hauteur moyenne

-  Mort
-  1 - 50 cm
-  > 50 - 100 cm
-  > 100 - 150 cm

-  Anthropisé (camp et piste)
-  Perturbé (abords de piste)

0 100 200 300 400 m



Fond : © CNES (20161205), Distribution AIRBUS DS, France

Sources : CBNM, IGN (2017)





Auteur : CBNM (2017, 2020)



CARTE DU VELOUTIER SUR TROMELIN

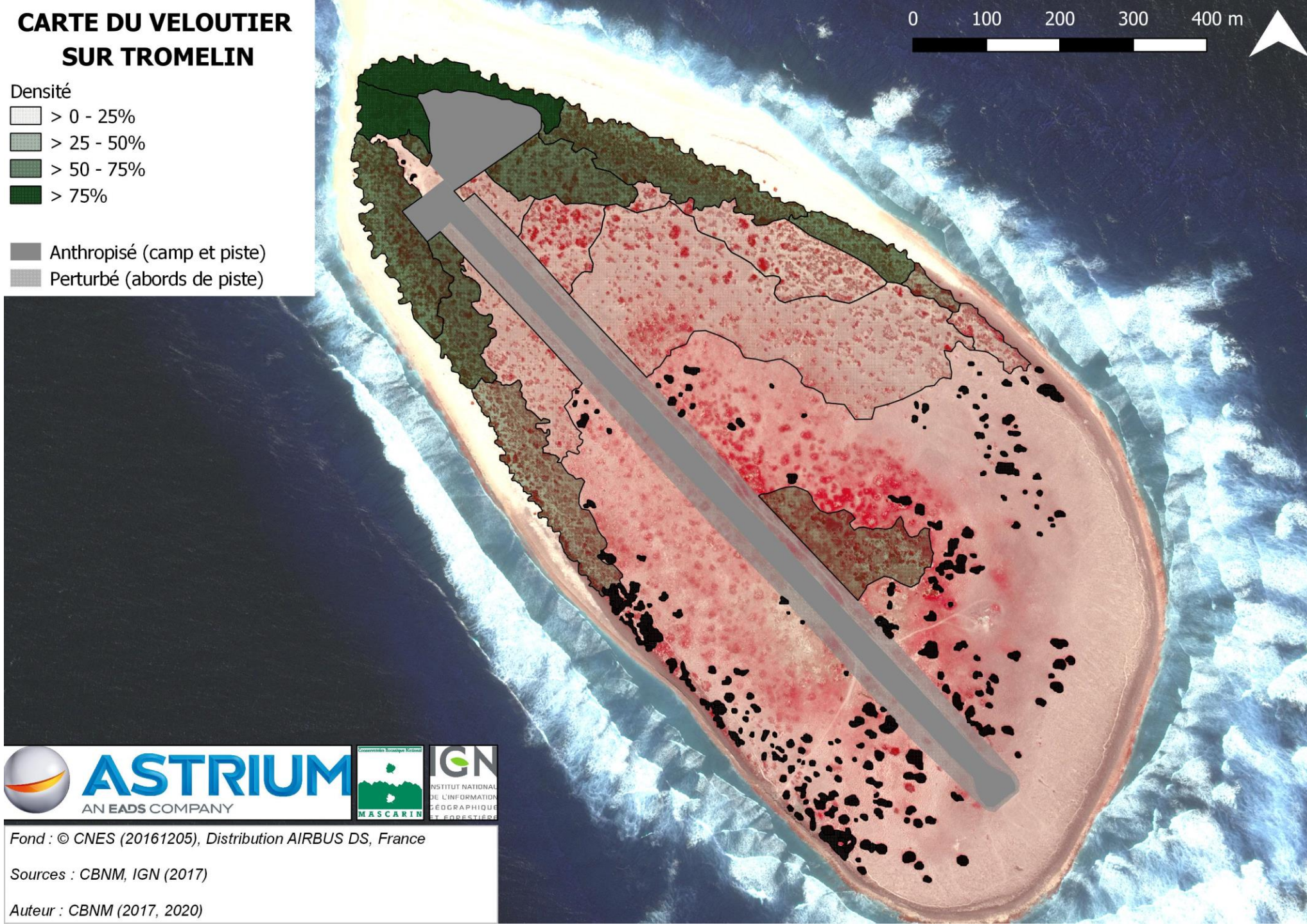
0 100 200 300 400 m



Densité

-  > 0 - 25%
-  > 25 - 50%
-  > 50 - 75%
-  > 75%

-  Anthropisé (camp et piste)
-  Perturbé (abords de piste)



Fond : © CNES (20161205), Distribution AIRBUS DS, France

Sources : CBNM, IGN (2017)

Auteur : CBNM (2017, 2020)