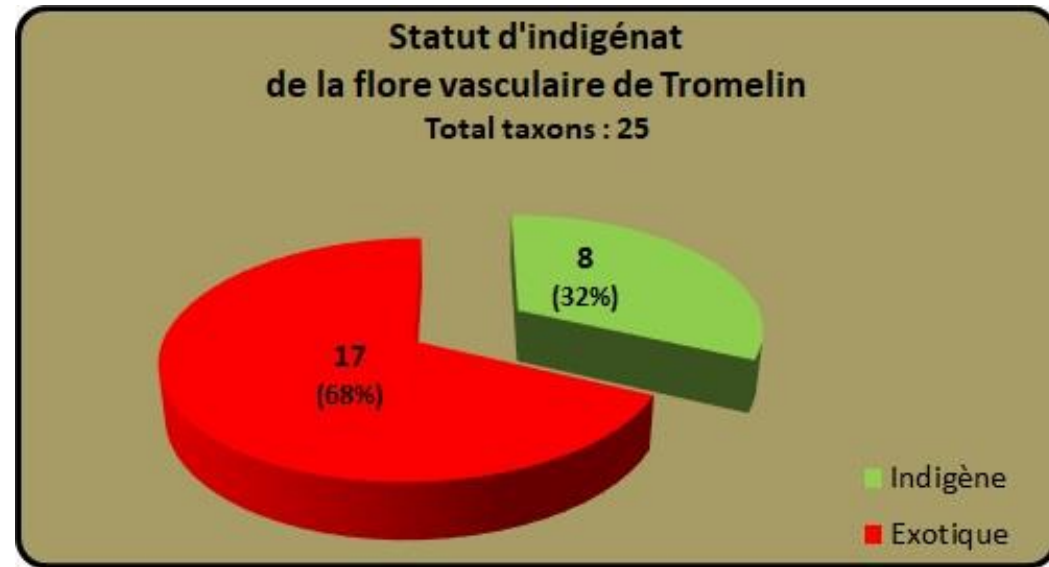


## Préambule

### ➤ Bilan floristique



### ➤ Travaux phytosociologiques :

- 103 relevés (2017)
- 3 systèmes / 8 habitats (niveau 5)
- Toposéquence
- Typologie de la végétation et des habitats de Tromelin

## Cartographie des systèmes de végétation

### ➤ Processus de segmentation :

- Image THR PLEIADE (20160530)
- Segmentation C1 = env. 700 polygones

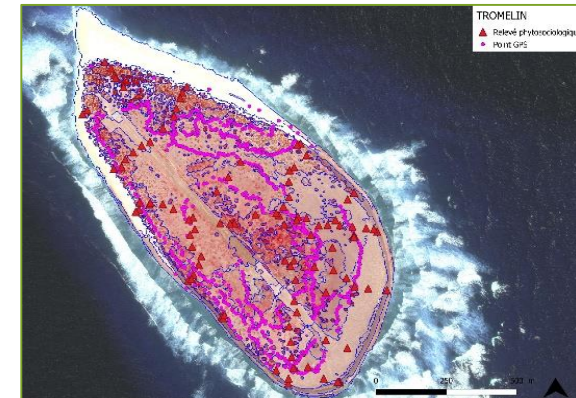
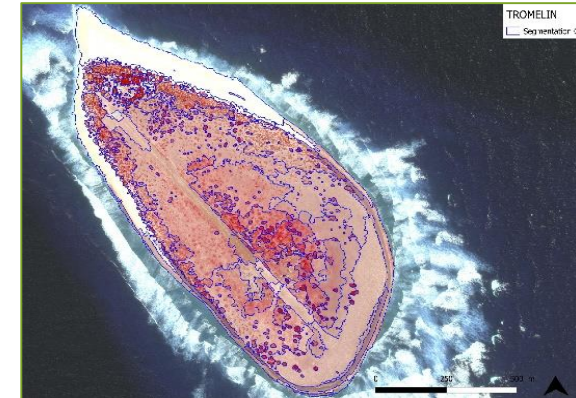
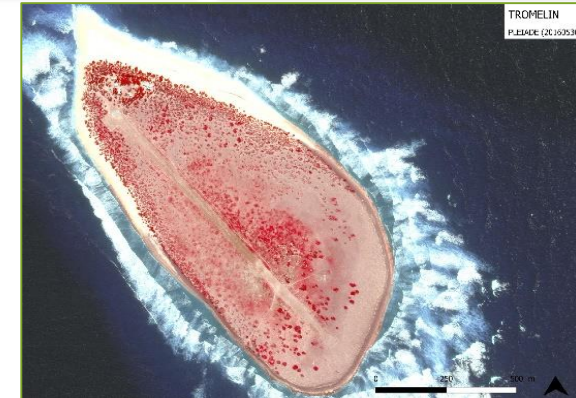
### ➤ Phase de terrain

- Janvier – mars 2018
- Gabrielle Dicque et Jean Hivert
- Datas : substrat, relief (géomorphologie)
- Méthode inspirée de Marriner et al. 2010 \*
- Vérification des polygones C1 & prise de points GPS (env. 800)

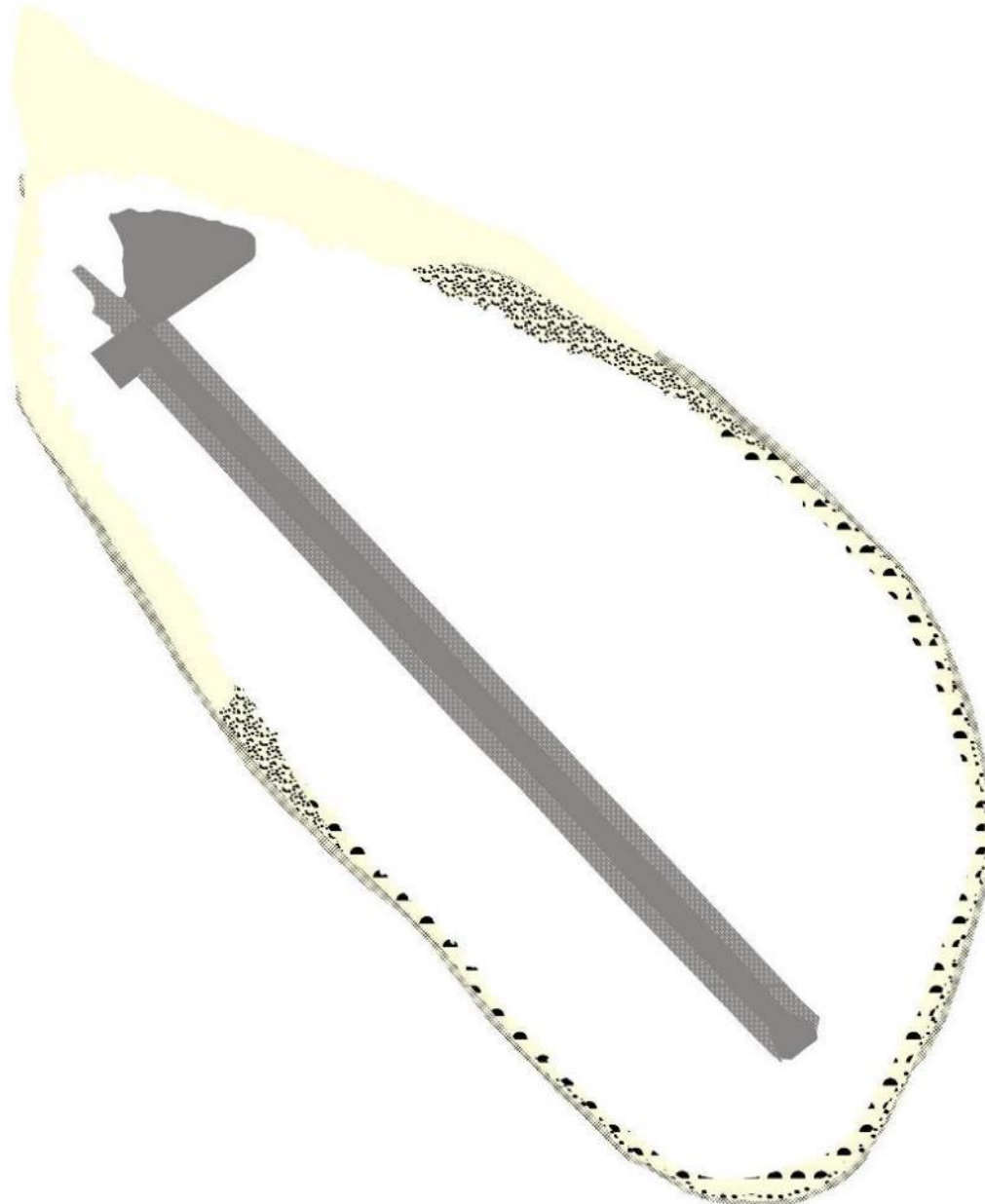
### ➤ Exploitation des données :

- Points de référence : relevés phytosociologiques, PP, collections végétales, taxons patrimoniaux, EEE...

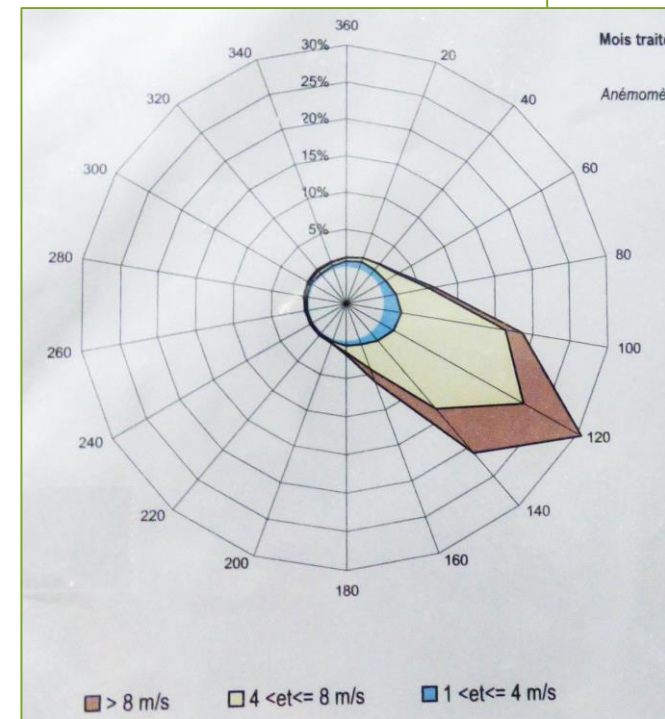
⇒ Carte de la géomorphologie et des systèmes de végétation de Tromelin + typologie



## Plages / Secteurs anthropisés et perturbés



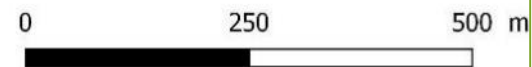
- Plage (sable)
- Plage mixte (sable fin et blocs)
- Plage mixte (sable grossier et blocs)
- Plage de tempête (blocs)
- Plage de beach-rock
- Anthropisé (camp et piste aviation)
- Perturbé (abords de piste)



0 250 500 m



## Plage



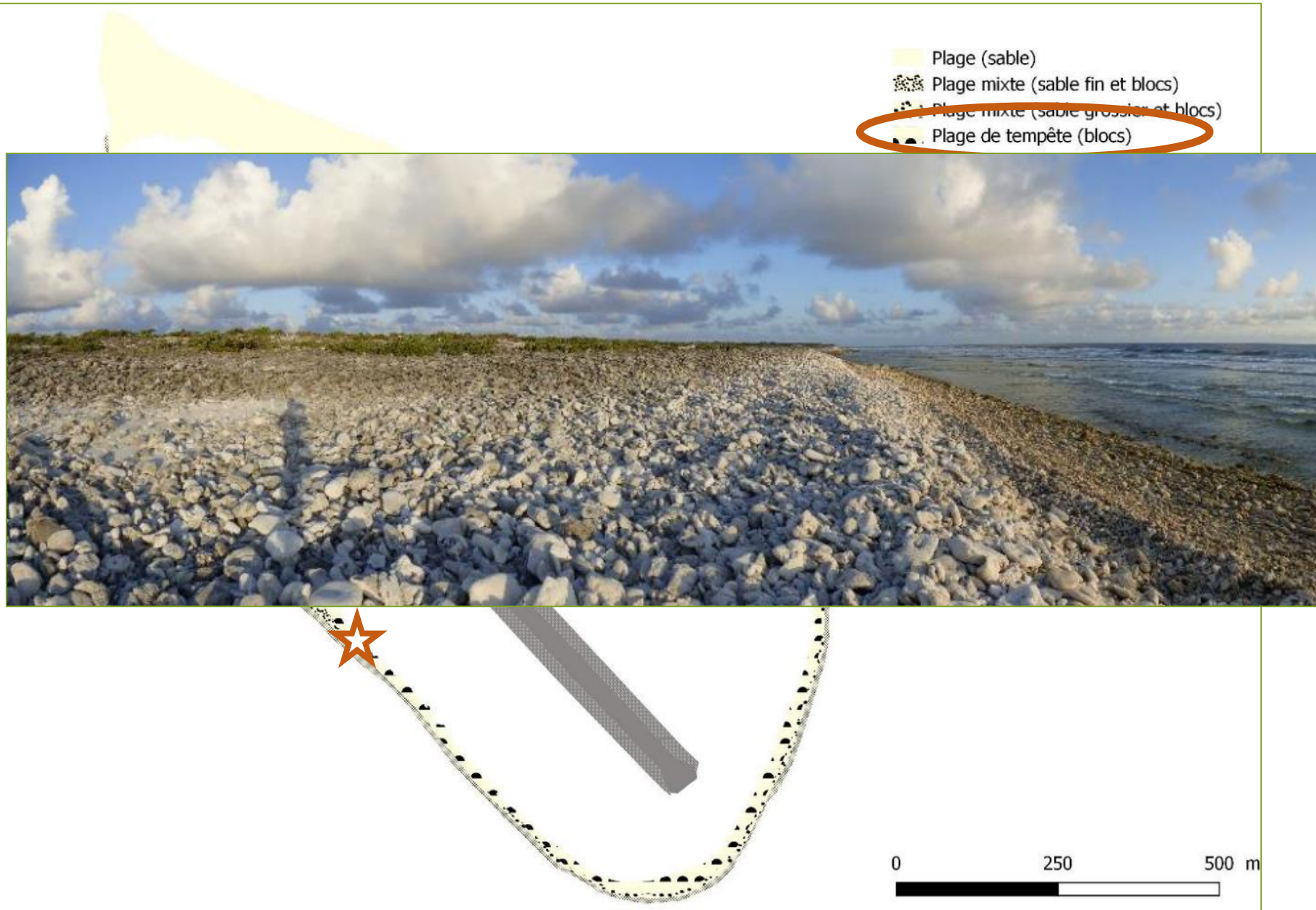
## Plage



## Plage

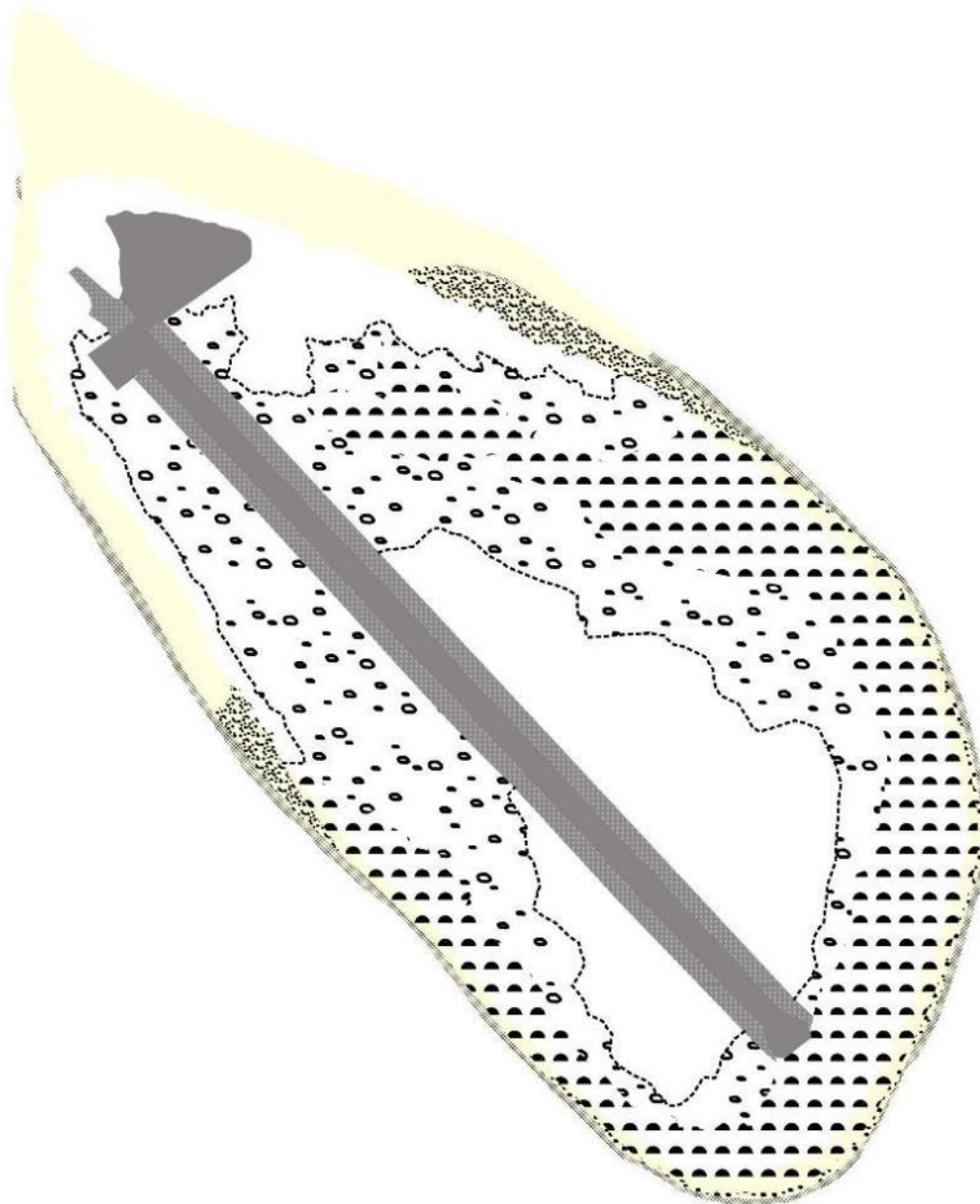


# Plage



## Laisse de tempête

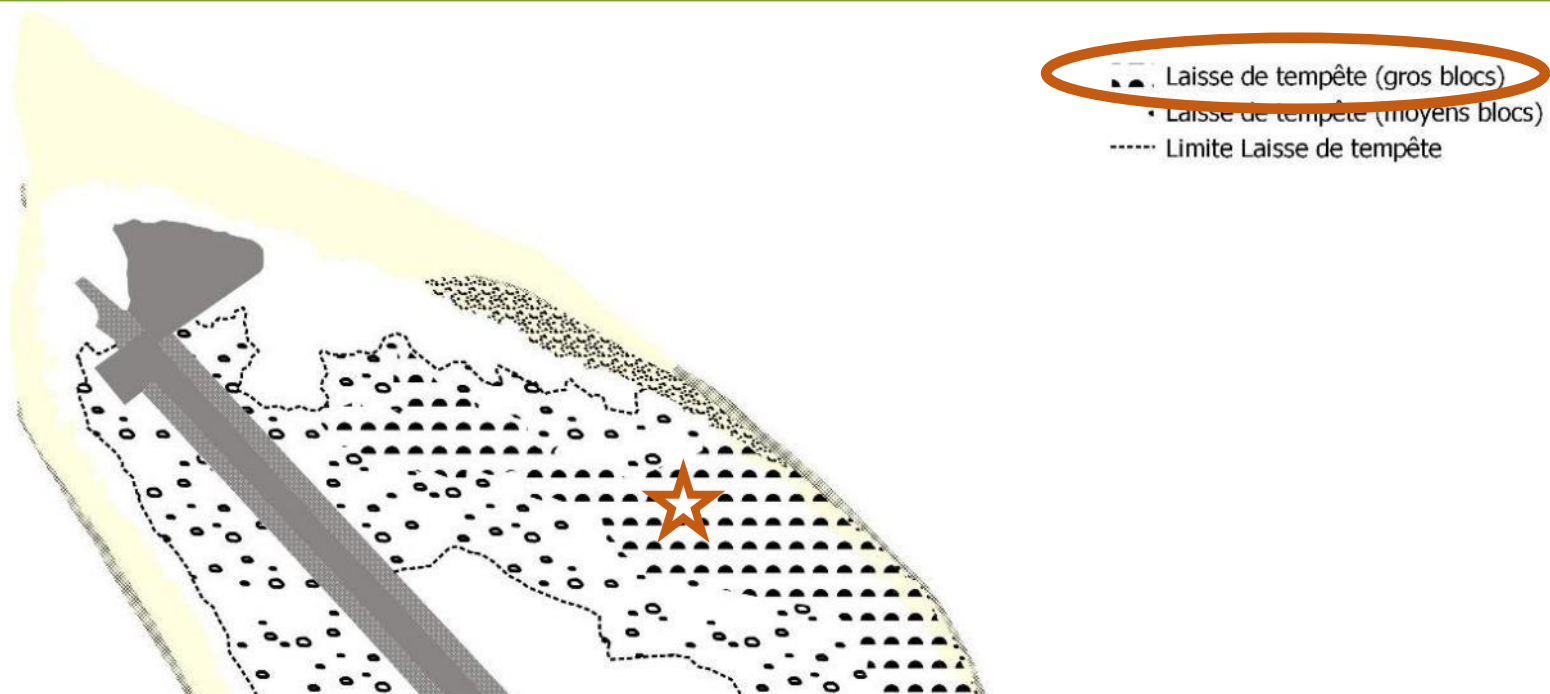
- Laisse de tempête (gros blocs)
- Laisse de tempête (moyens blocs)
- Limite Laisse de tempête



0 250 500 m






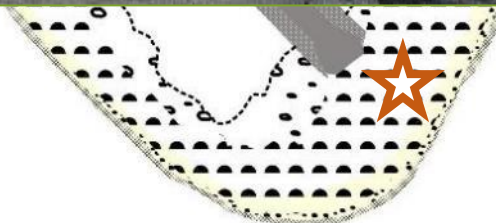
## Laisse de tempête



## Laisse de tempête



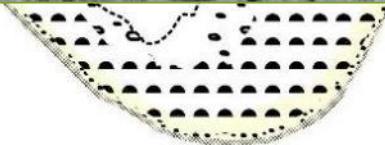
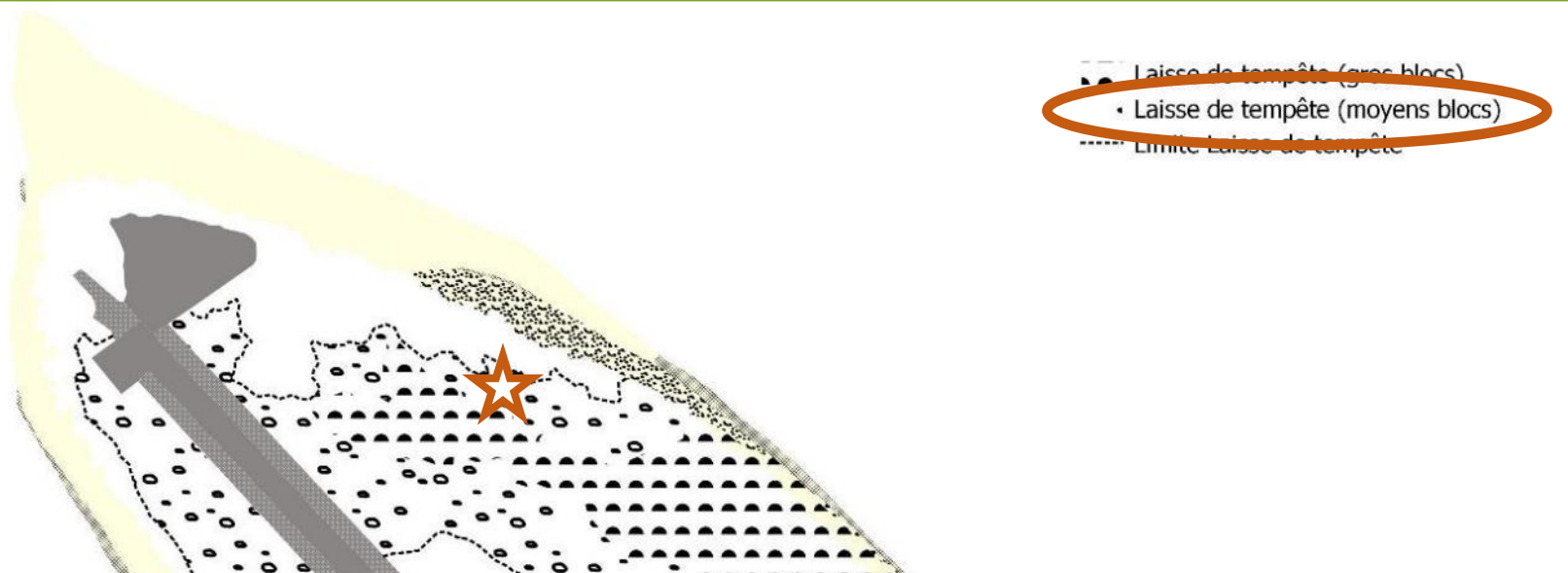
-  Laisse de tempête (gros blocs)
-  Laisse de tempête (moyens blocs)
-  Limite Laisse de tempête



0 250 500 m



## Laisse de tempête



0 250 500 m

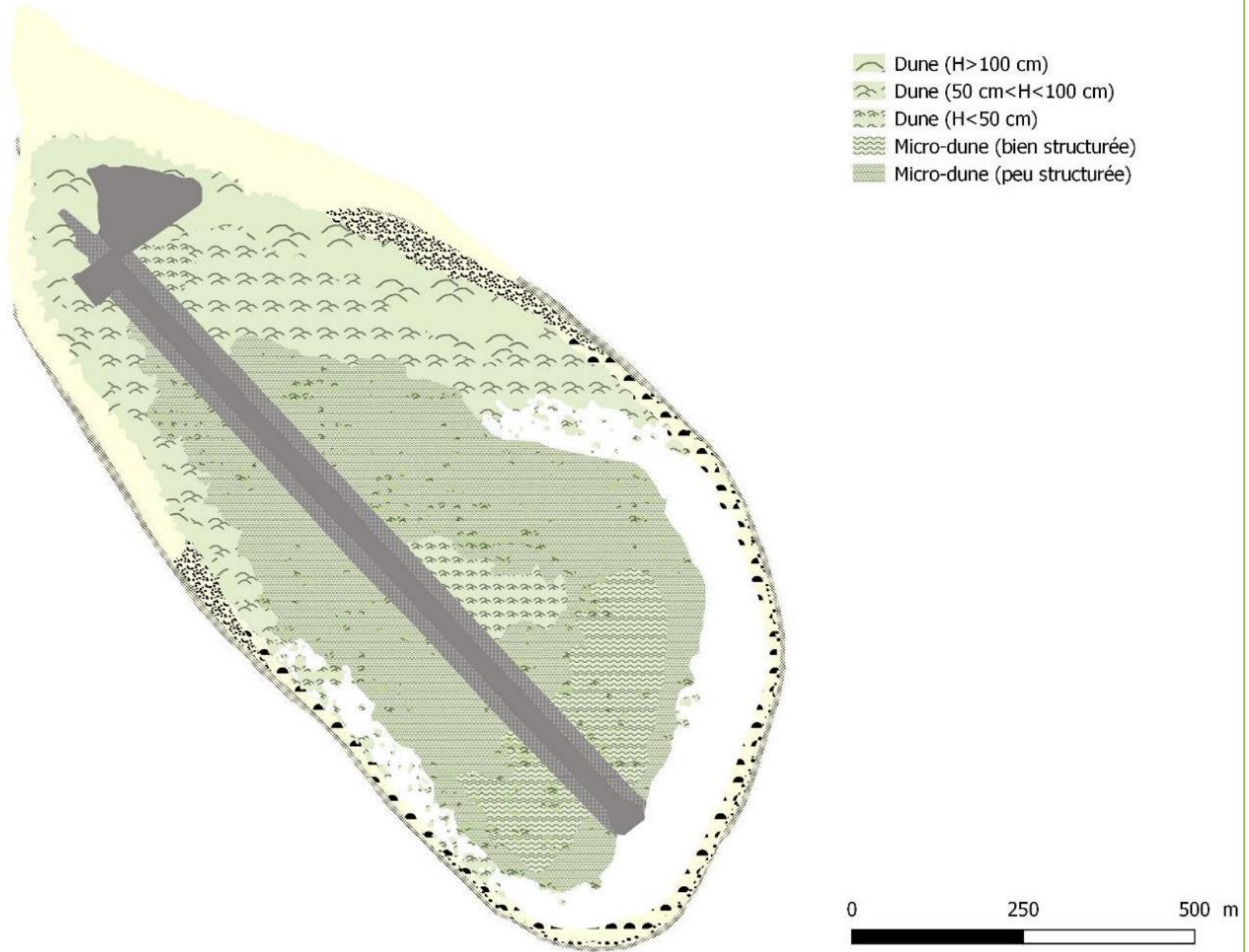
## Laisse de tempête

- Laisse de tempête (gros blocs)
- Laisse de tempête (moyens blocs)
- Limite Laisse de tempête

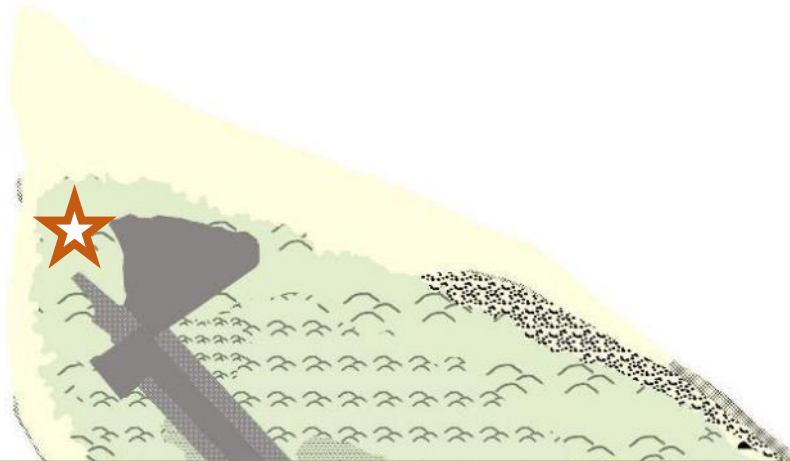


0 250 500 m

## Relief dunaire



## Relief dunaire



- Dune ( $H > 100$  cm)
- Dune ( $50 \text{ cm} < H < 100$  cm)
- Dune ( $H < 50$  cm)
- Micro-dune (bien structurée)
- Micro-dune (peu structurée)



0 250 500 m

## Relief dunaire



## Relief dunaire





## Relief dunaire








## Relief dunaire



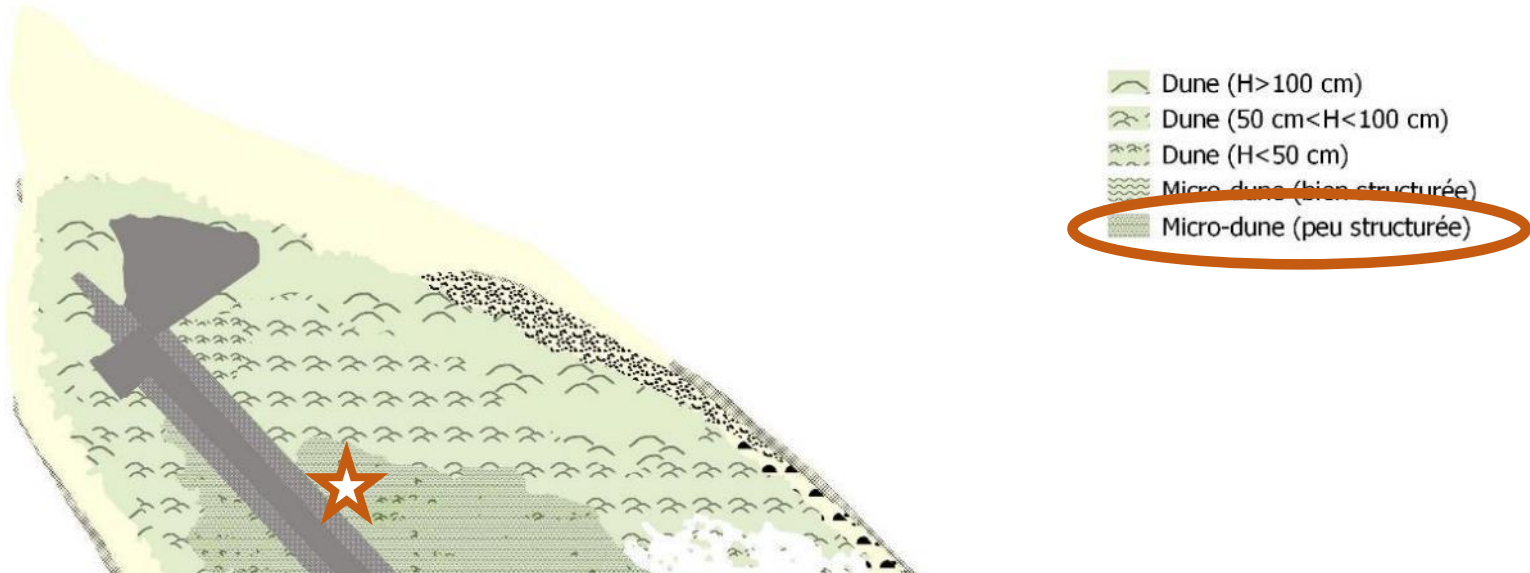
## Relief dunaire



-  Dune (H > 100 cm)
-  Dune (50 cm < H < 100 cm)
-  Dune (H < 50 cm)
-  Micro-dune (bien structurée)
-  Micro-dune (peu structurée)

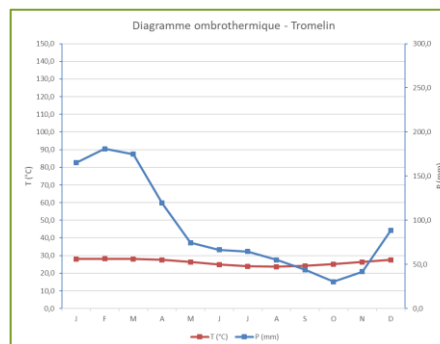
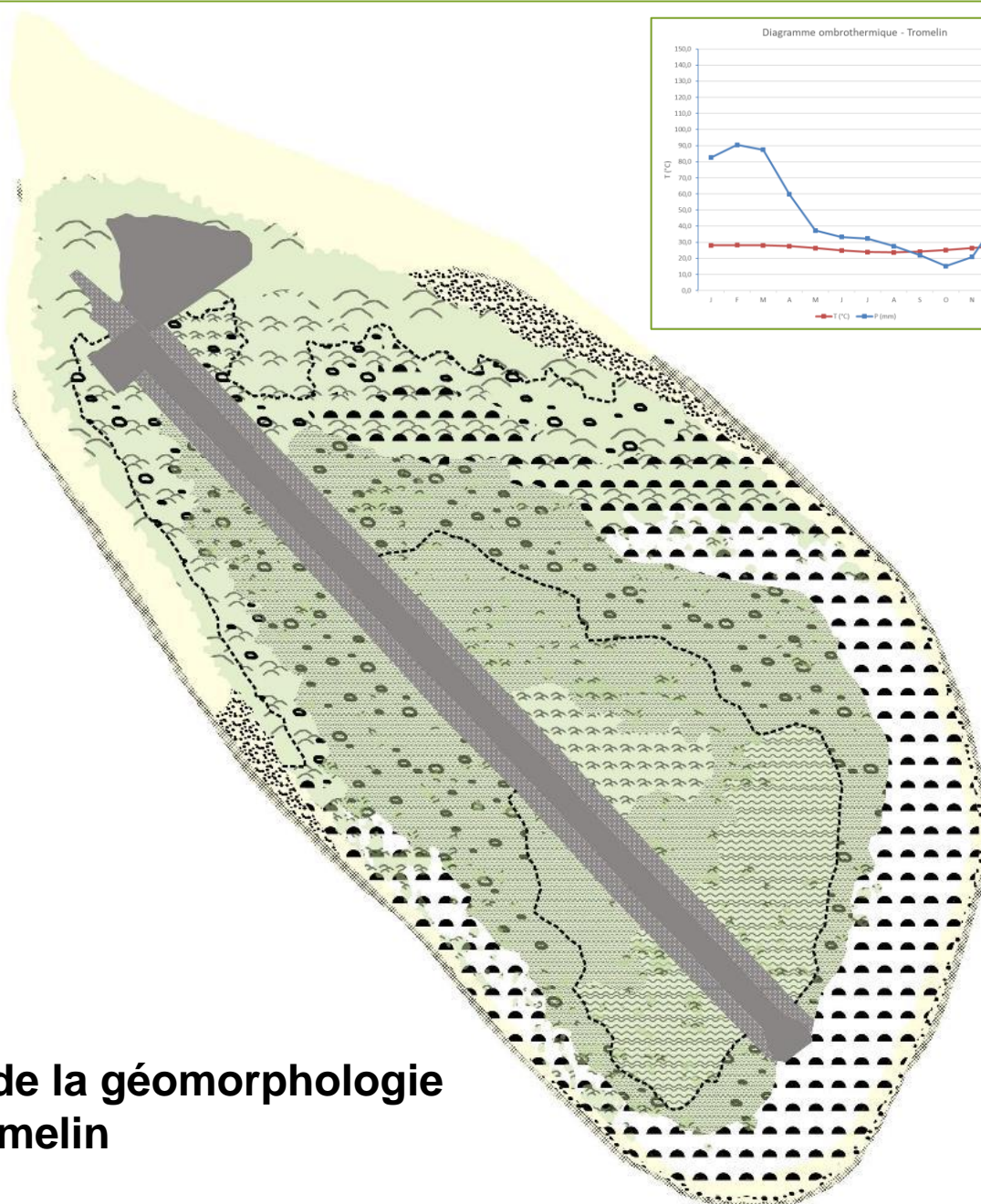


## Relief dunaire

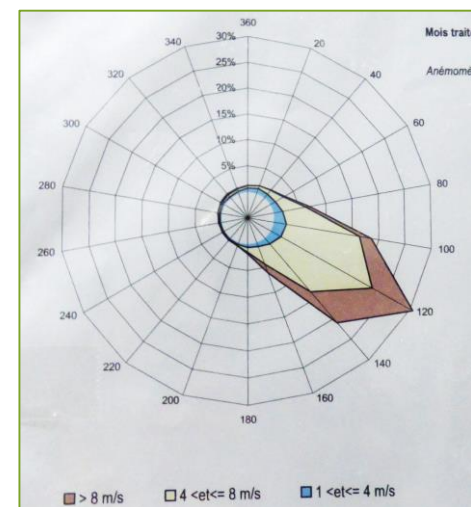


## Relief dunaire

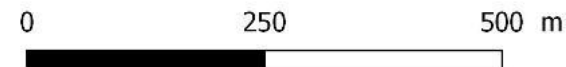




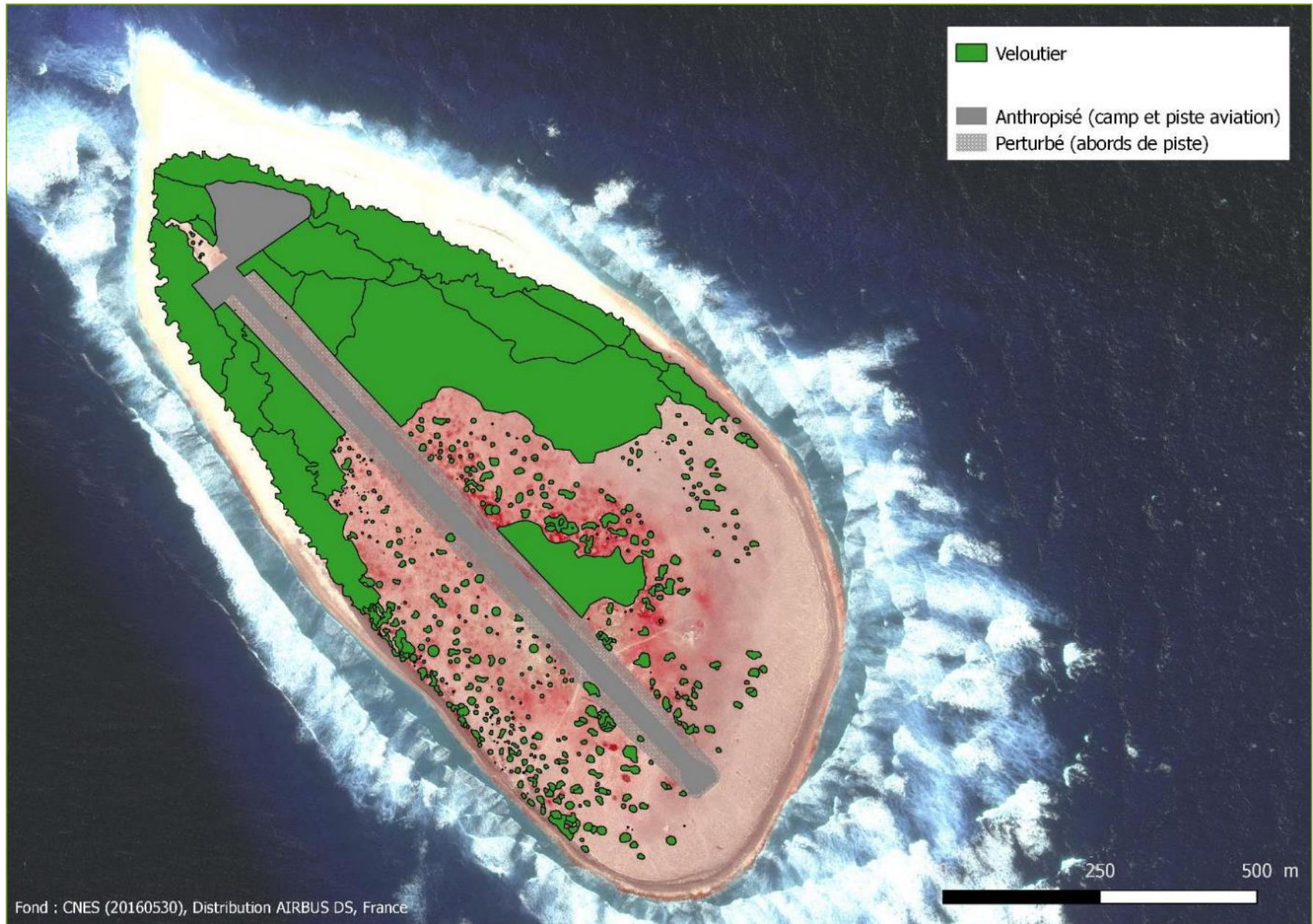
- ▲ Laisse de tempête (gros blocs)
- Laisse de tempête (moyens blocs)
- Limite Laisse de tempête
- ⌒ Dune (H>100 cm)
- ⌒ Dune (50 cm<H<100 cm)
- ⌒ Dune (H<50 cm)
- ⌒ Micro-dune (bien structurée)
- ⌒ Micro-dune (peu structurée)
- ⌒ Plage (sable)
- ⌒ Plage mixte (sable fin et blocs)
- ⌒ Plage mixte (sable grossier et blocs)
- ⌒ Plage de tempête (blocs)
- ⌒ Beach-rock
- Anthropisé (camp et piste aviation)
- Perturbé (abords de piste)



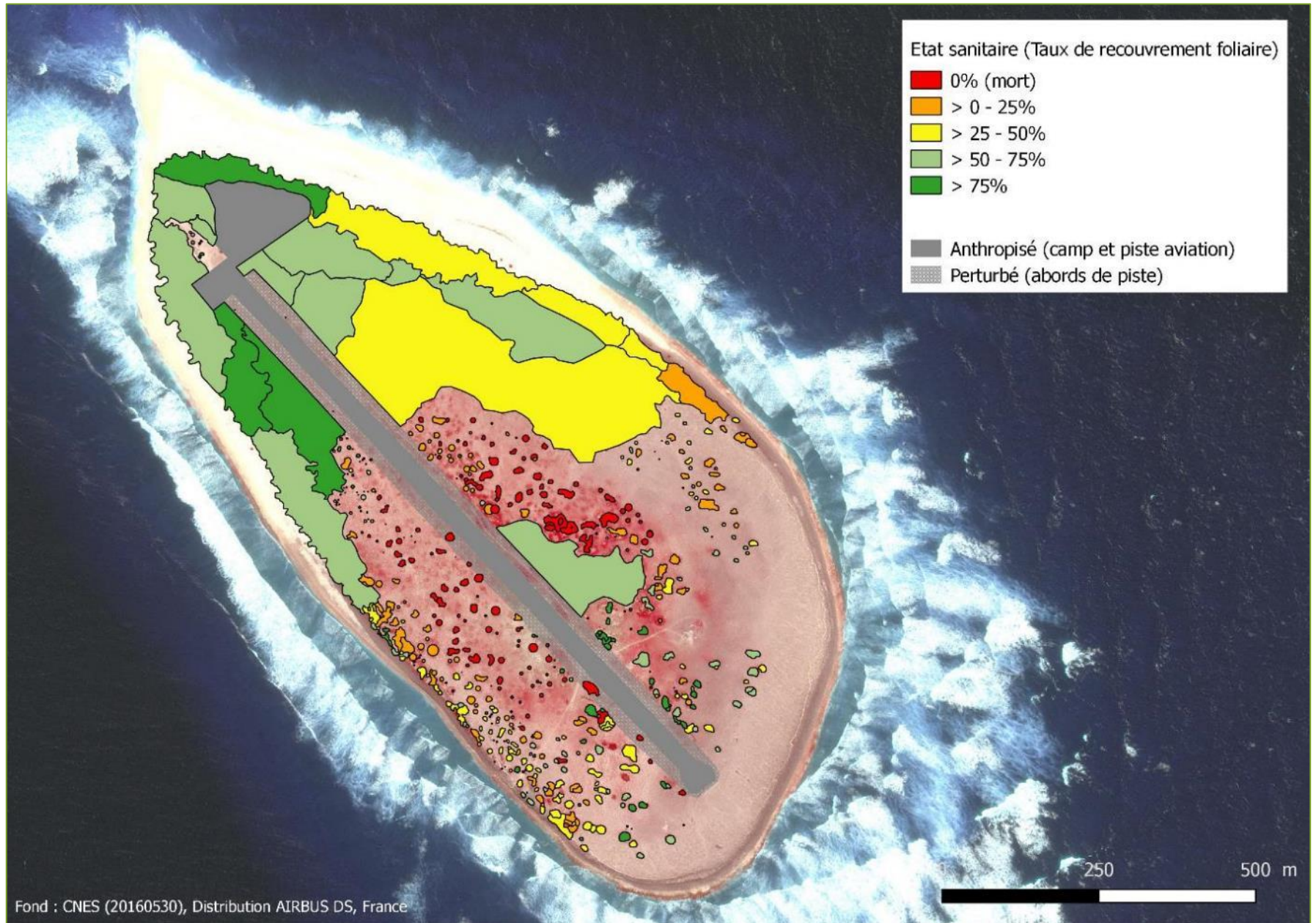
Carte de la géomorphologie de Tromelin



## Veloutier (*Heliotropium foertherianum*)

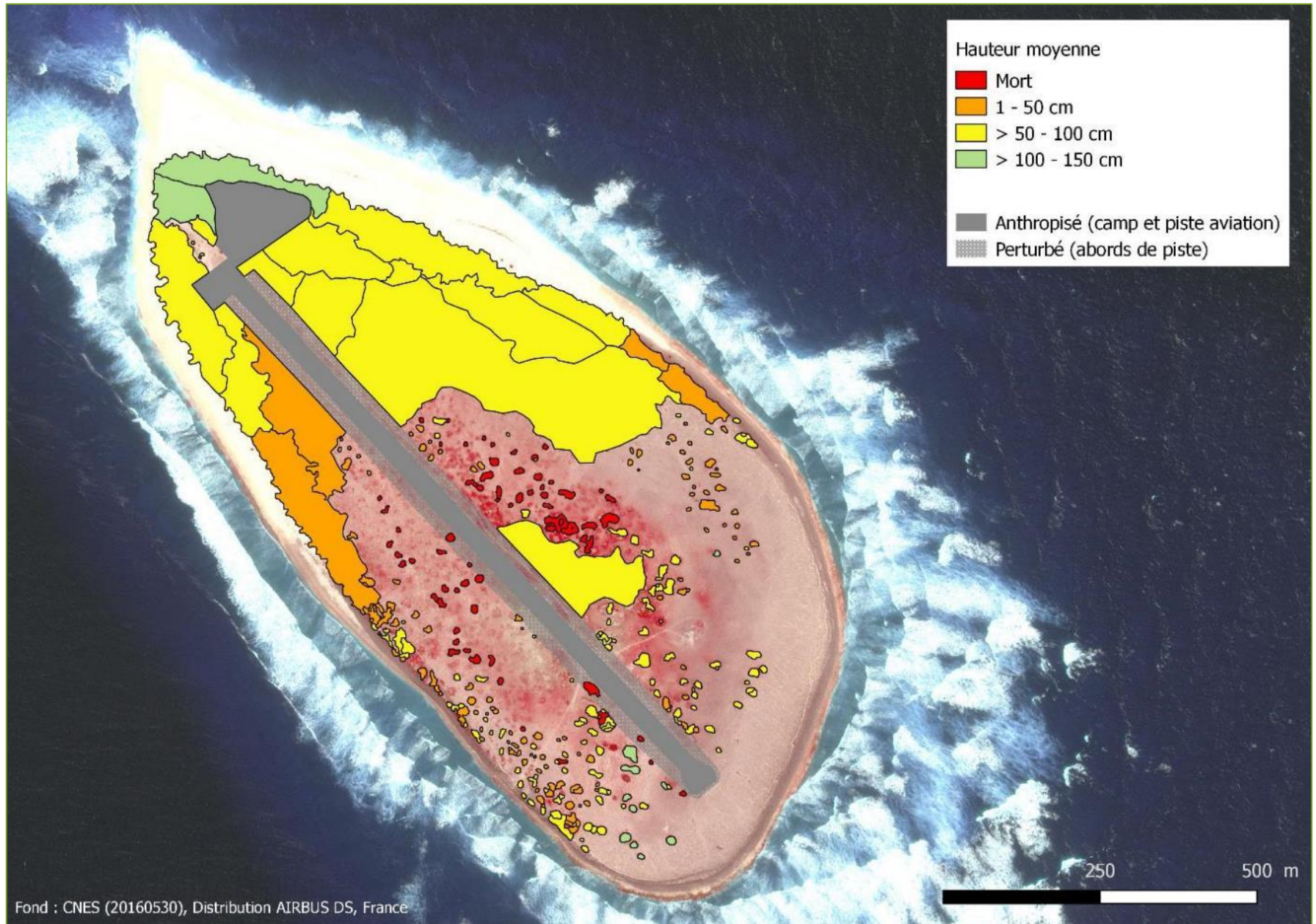


## Veloutier (*Heliotropium foertherianum*)





## Veloutier (*Heliotropium foertherianum*)



## Veloutier (*Heliotropium foertherianum*)

